

THE  
**GABLES**  
—at WESTMORELAND—

**Marketing Plans**



**SADDLEBROOK**  
*The Luxury Homebuilder*

**TRADITIONAL**



**CLASSIC**

THE  
**GABLES**  
 — at WESTMORELAND —

**BELMONT**

**3-4 Bedrooms, 2.5-3.5 Bathrooms**

**Total Living Area: 2,464 Square Feet**

**First Floor: 2,464 Square Feet**

**Second Floor: Unfinished Bonus**

**FLOORPLAN FEATURES**

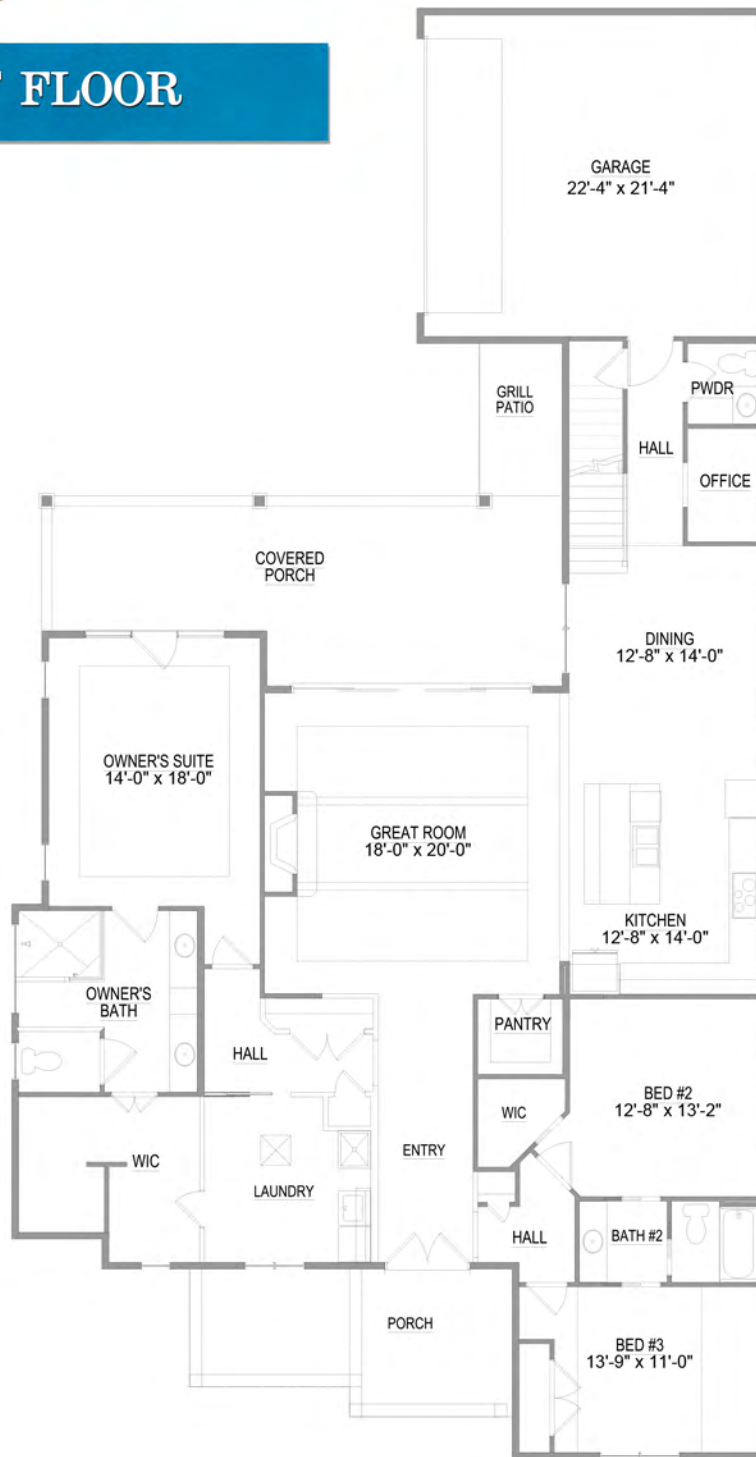
- One Level Living w/ 10 ft Ceilings
- Gourmet Chef's Kitchen w/ Oversized Island & Pantry
- Luxurious Owner's Suite w/ Spa Master Bath
  - Office Nook off Great Room
  - Expansive Storage Area
- Front and Rear Covered Porches

(865) 966-8700

[info@saddlebrookproperties.com](mailto:info@saddlebrookproperties.com)

[www.saddlebrookproperties.com](http://www.saddlebrookproperties.com)

# CLASSIC 1<sup>ST</sup> FLOOR



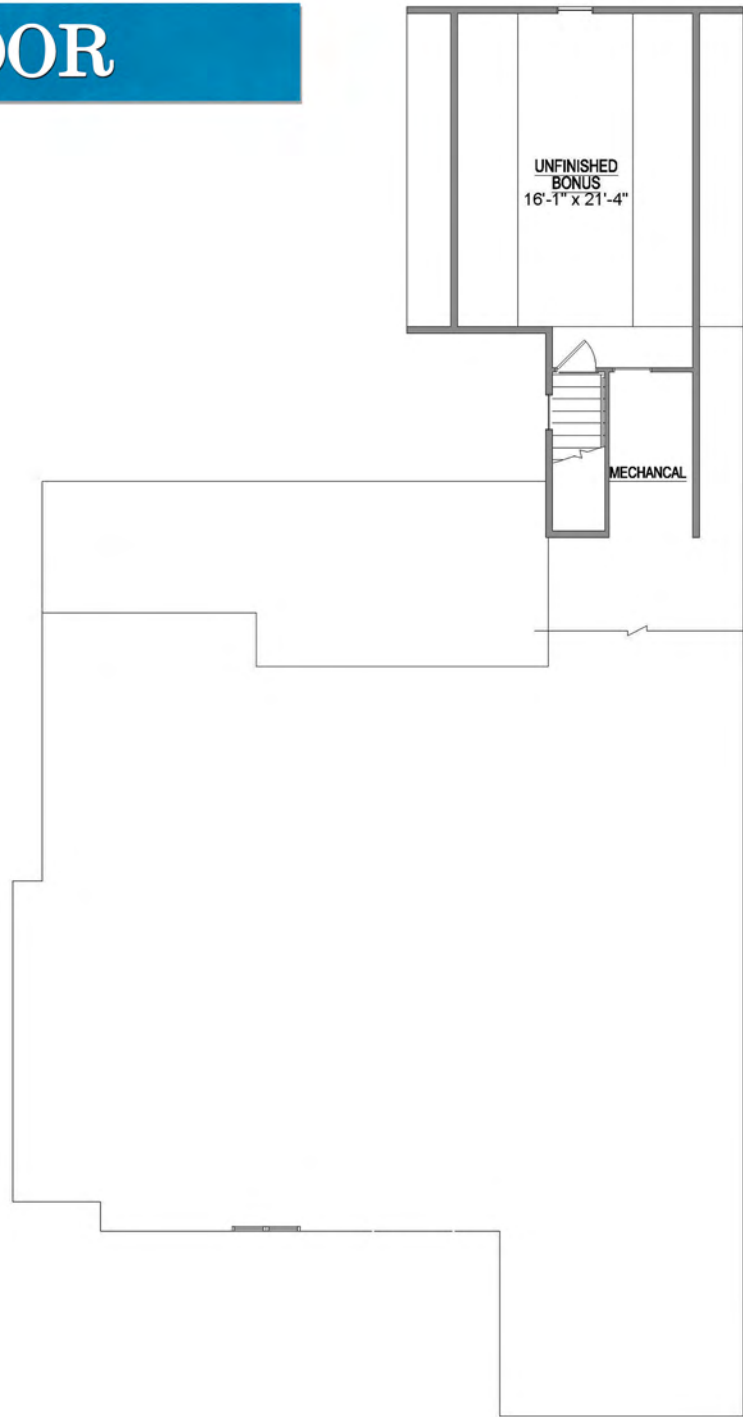
# TRADITIONAL 1<sup>ST</sup> FLOOR



**SADDLEBROOK**  
*The Luxury Homebuilder*

Saddlebrook Properties, LLC uses pictures, elevations and floor plans for illustrative marketing purposes only. Saddlebrook's working construction documents & codes take precedent in guiding the construction of each home. Measurements, prices and specifications are subject to change without notice. All offerings are subject to errors and omissions.

# 2<sup>ND</sup> FLOOR

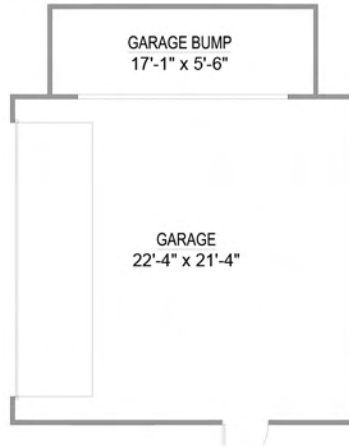


# Options

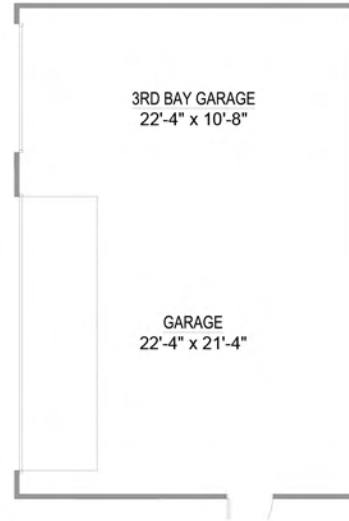
**Deluxe Laundry**



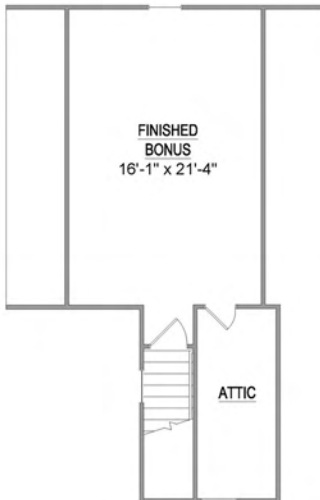
**Garage Bump**



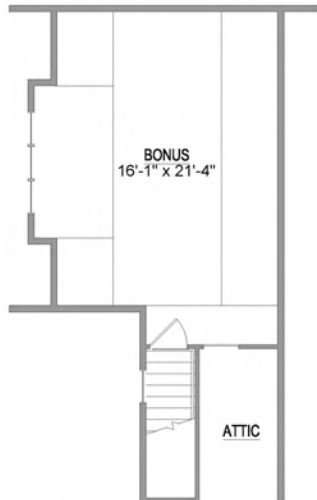
**3rd Bay Garage**



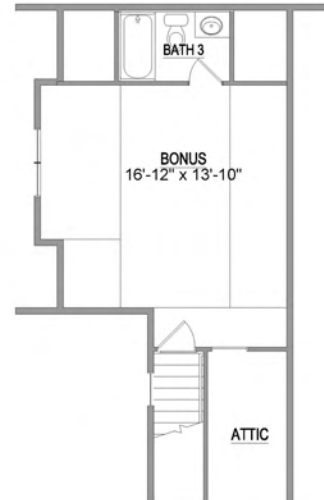
**Bonus**



**Bonus w/ Dormer**



**Bonus w/ Bath 3**





**SADDLEBROOK**  
*The Luxury Homebuilder*

**TRADITIONAL**



**CLASSIC**

THE  
**GABLES**  
— at WESTMORELAND —

**CALLAWAY**

**3-4 Bedrooms, 3.5-4.5 Bathrooms**

**Total Living Area: 3,055 Square Feet**

**First Floor: 2,138 Square Feet**

**Second Floor: 917 Square Feet**

**FLOORPLAN FEATURES**

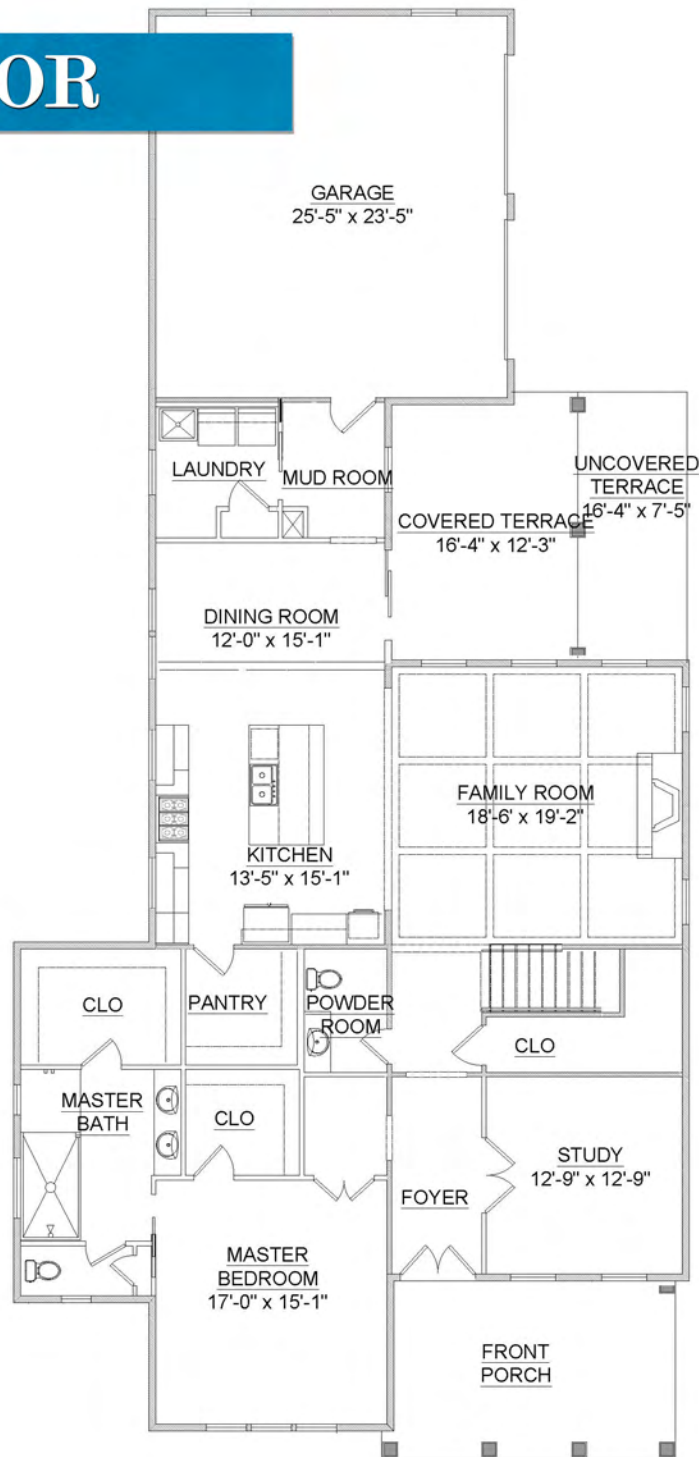
- Luxurious Southern Charm
- Secluded Main Level Owner's Suite w/ His & Her Closets
  - Spa Tiled Walk-in Shower
- Gourmet Kitchen open to Family Area
- 10 ft Main Level Ceilings with Extensive Moldings
  - 2 Upstairs bedrooms with Ensuites

(865) 966-8700

[info@saddlebrookproperties.com](mailto:info@saddlebrookproperties.com)

[www.saddlebrookproperties.com](http://www.saddlebrookproperties.com)

# 1<sup>ST</sup> FLOOR



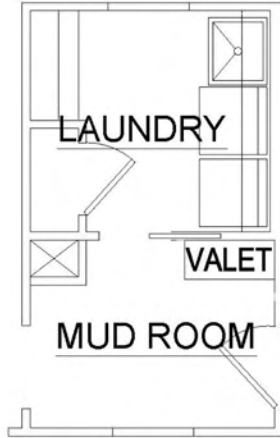


# 2<sup>ND</sup> FLOOR

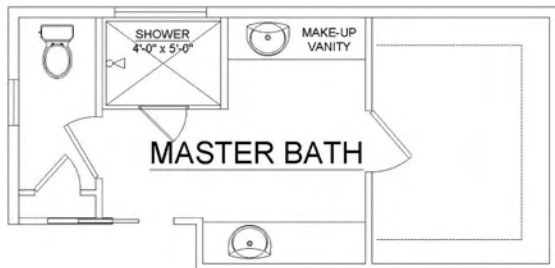


# Options

## Laundry Room & Valet



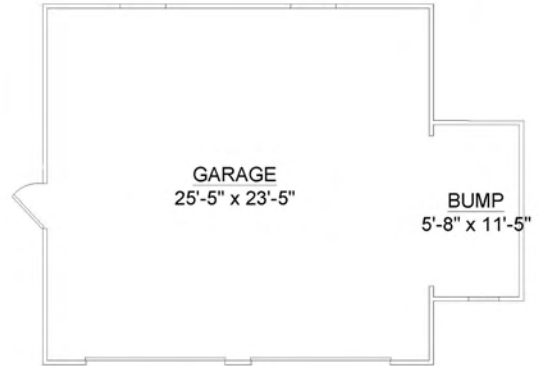
## Deluxe Owner's Bath



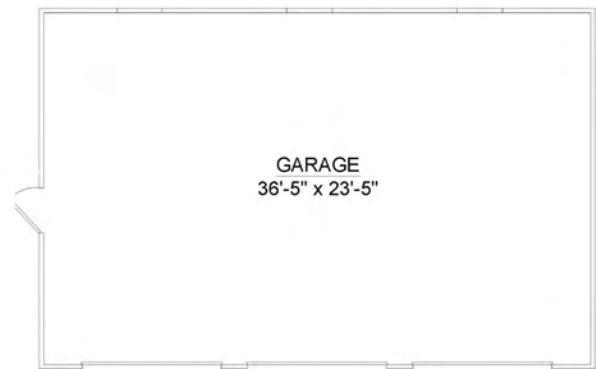
## Optional Tub



## 3rd Bay Garage



## Garage Bump



## Bonus Room





**SADDLEBROOK**  
The Luxury Homebuilder

**TRADITIONAL**



**CLASSIC**

THE  
**GABLES**  
— at WESTMORELAND —

**CAROLINA**

**3-4 Bedrooms, 3.5-4.5 Bathrooms**

**Total Living Area: 3,133 Square Feet**

**First Floor: 2,098 Square Feet**

**Second Floor: 1,033 Square Feet**

**FLOORPLAN FEATURES**

- Main Level Owner's Suite
- Enormous Walk-in Closet
- Epicurean Kitchen w/ Gas Cooktop/Built-in Oven
- Main Level Guest Suite/Office
- Vaulted Great Room with Exquisite Dining Room
- Expansive Covered Porch and Patio

(865) 966-8700

info@saddlebrookproperties.com  
www.saddlebrookproperties.com

# 1<sup>ST</sup> FLOOR



## 2<sup>ND</sup> FLOOR (CLASSIC)

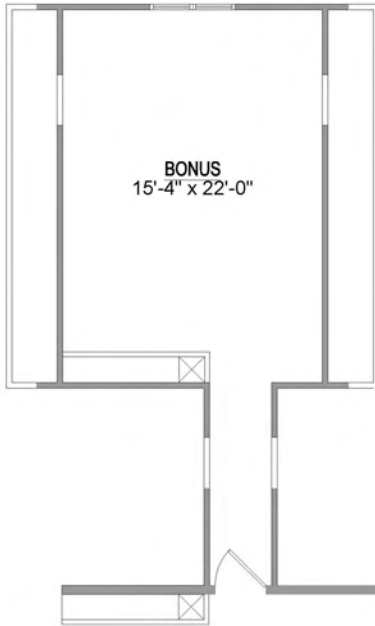


## 2<sup>ND</sup> FLOOR (TRADITIONAL)

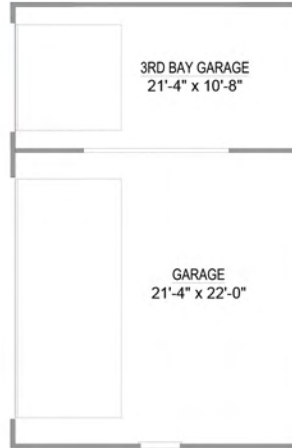


# Options

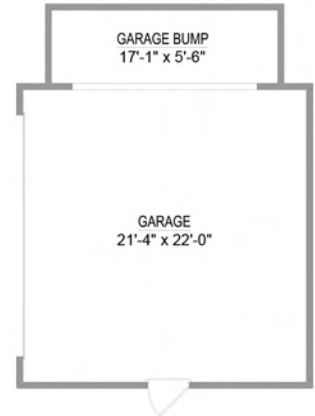
### Bonus Room



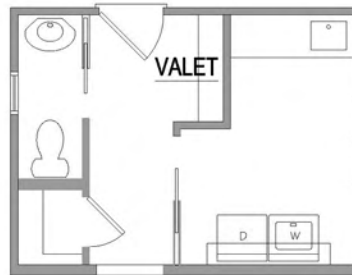
### 3rd Bay Garage



### Garage Bump



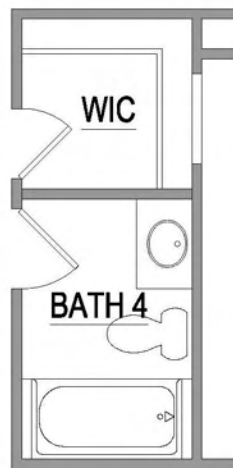
### Valet



### Deluxe Bath



### Bath 4 and WIC



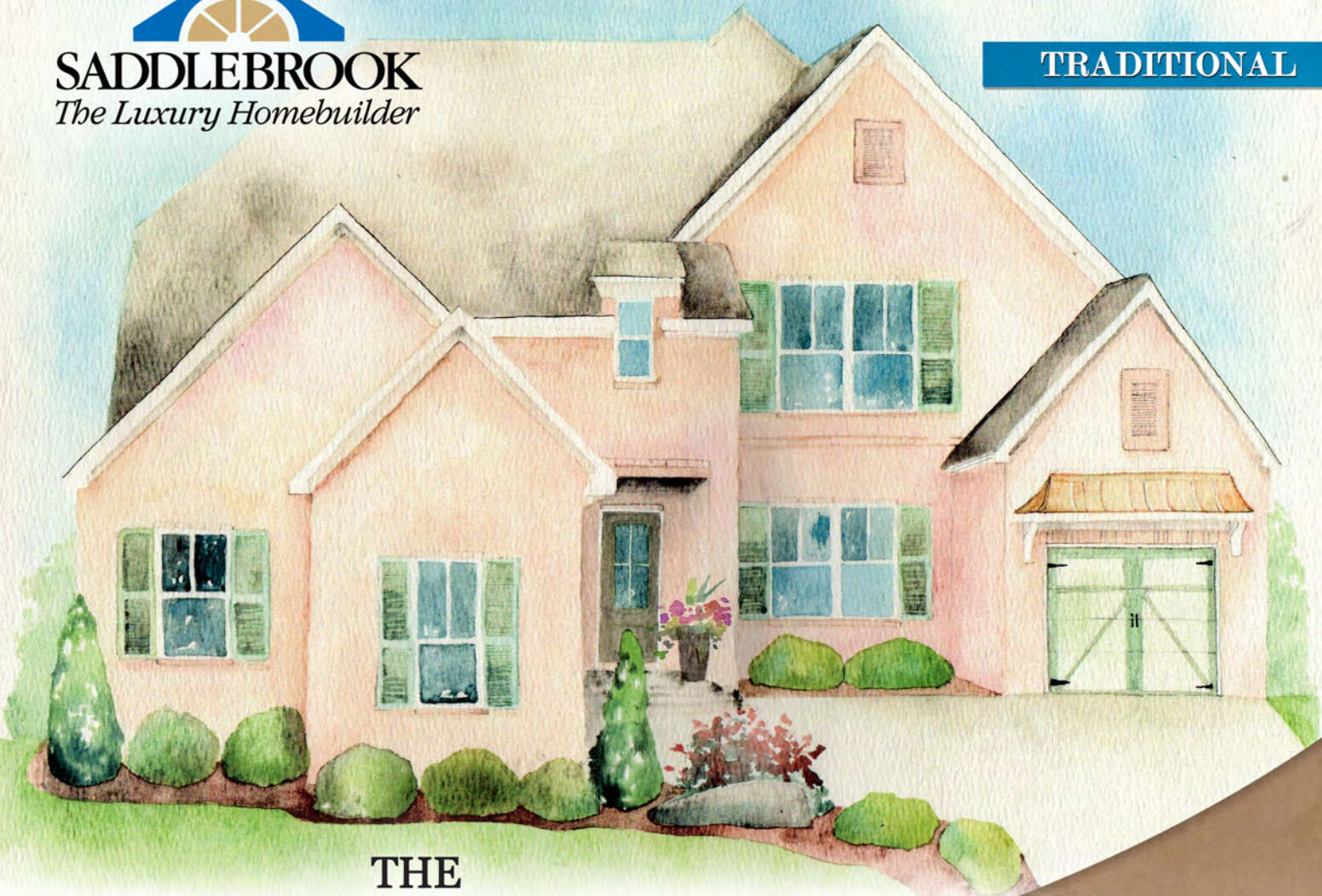
### Deluxe Laundry





**SADDLEBROOK**  
*The Luxury Homebuilder*

**TRADITIONAL**



THE  
**GABLES**  
— at WESTMORELAND —

**CONCORD**

**4 Bedrooms, 3.5 Bathrooms**

**Total Living Area: 3958 Square Feet**

**First Floor: 2300 Square Feet**

**Second Floor: 1658 Square Feet**

**FLOORPLAN FEATURES**

- Luxurious Main Level Living
- Spa Like Master Bathroom
- Gourmet Kitchen with Oversized Island
- 10 ft Main Level Ceilings with Soaring 2 Story Foyer
- Standard 3 Car Included
- Master Bedroom and Additional Office on the Main Level
- Expansive Covered Porch

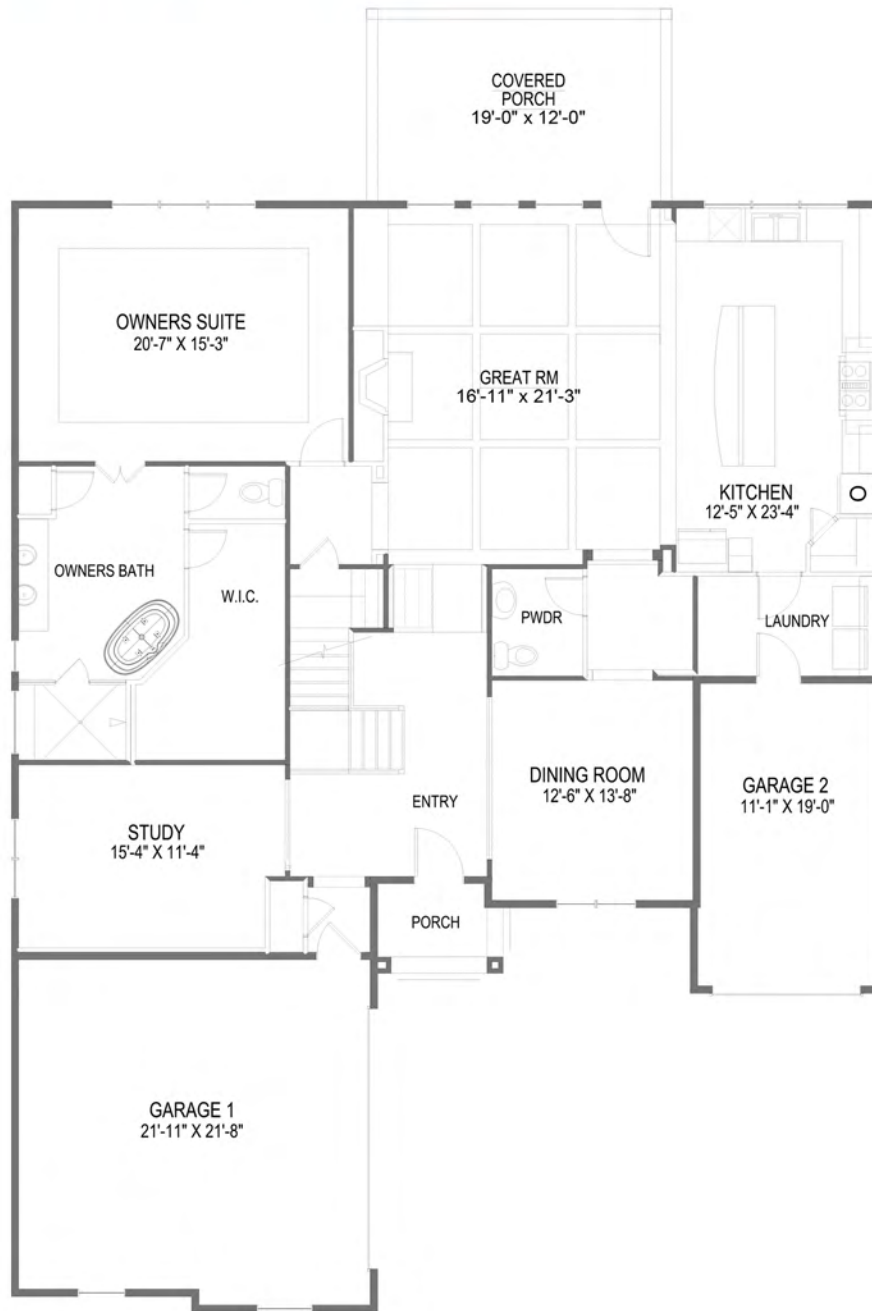
(865) 966-8700

[info@saddlebrookproperties.com](mailto:info@saddlebrookproperties.com)

[www.saddlebrookproperties.com](http://www.saddlebrookproperties.com)



# 1<sup>ST</sup> FLOOR



**SADDLEBROOK**  
*The Luxury Homebuilder*

Saddlebrook Properties, LLC uses pictures, elevations and floor plans for illustrative marketing purposes only. Saddlebrook's working construction documents & codes take precedent in guiding the construction of each home. Measurements, prices and specifications are subject to change without notice. All offerings are subject to errors and omissions.

# 2<sup>ND</sup> FLOOR



# Options

## Optional Screened Porch



## Optional Butler's Pantry



## Optional Deluxe Laundry





**SADDLEBROOK**  
*The Luxury Homebuilder*

**TRADITIONAL**



**CLASSIC**

# THE GABLES

— at WESTMORELAND —

## DAKOTA

**3-4 Bedrooms, 4.5 Bathrooms**

**Total Living Area: 3,229 Square Feet**

**First Floor: 2,208 Square Feet**

**Second Floor: 1021 Square Feet**

## FLOORPLAN FEATURES

**Expansive Owner's Suite**  
**Spacious Covered Porch**  
**Main Level Guest Suite**  
**All Bedrooms with Full Baths**  
**Open Living Areas**

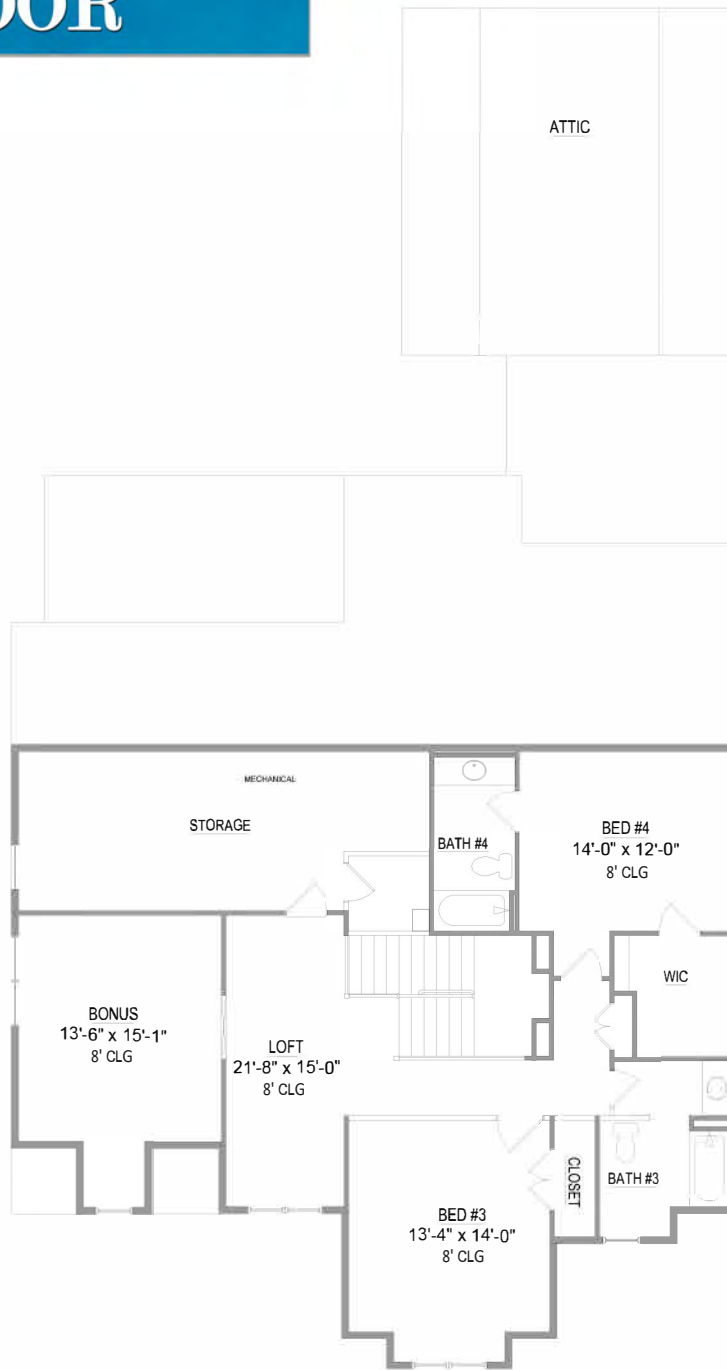
# 1<sup>ST</sup> FLOOR



**SADDLEBROOK**  
*The Luxury Homebuilder*

Saddlebrook Properties, LLC uses pictures, elevations and floor plans for illustrative marketing purposes only. Saddlebrook's working construction documents & codes take precedent in guiding the constructions of each home. Measurements, prices and specifications are subject to change without notice. All offerings are subject to errors and omissions.

# 2<sup>ND</sup> FLOOR

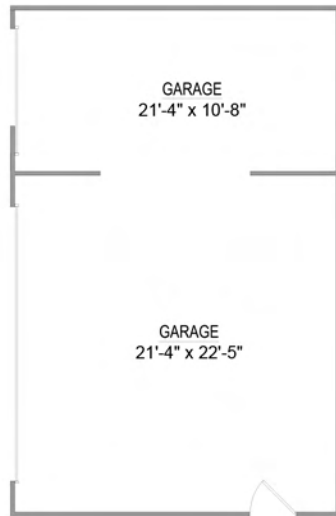


**SADDLEBROOK**  
*The Luxury Homebuilder*

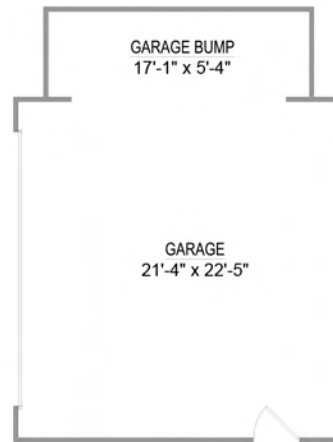
Saddlebrook Properties, LLC uses pictures, elevations and floor plans for illustrative marketing purposes only. Saddlebrook's working construction documents & codes take precedent in guiding the constructions of each home. Measurements, prices and specifications are subject to change without notice. All offerings are subject to errors and omissions.

# Options

### 3rd Bay Garage



### Garage Bump



**TRADITIONAL**



**CLASSIC**

THE  
**GABLES**  
— at WESTMORELAND —

**SHERWOOD**

**4 Bedrooms, 4 Bathrooms**

**Total Living Area: 3,754 Square Feet**

**First Floor: 2,552 Square Feet**

**Second Floor: 1,202 Square Feet**

**FLOORPLAN FEATURES**

- 2-Story Great Room
- Large Staircase with Open Loft
- Main Level Master and Guest Suite
  - Dedicated Office Space
- Impressive Master Bath w/ Double Vanities, Walk-in Shower & Tub
- Upper Level with 2 Bedroom Ensuities

(865) 966-8700

info@saddlebrookproperties.com  
www.saddlebrookproperties.com



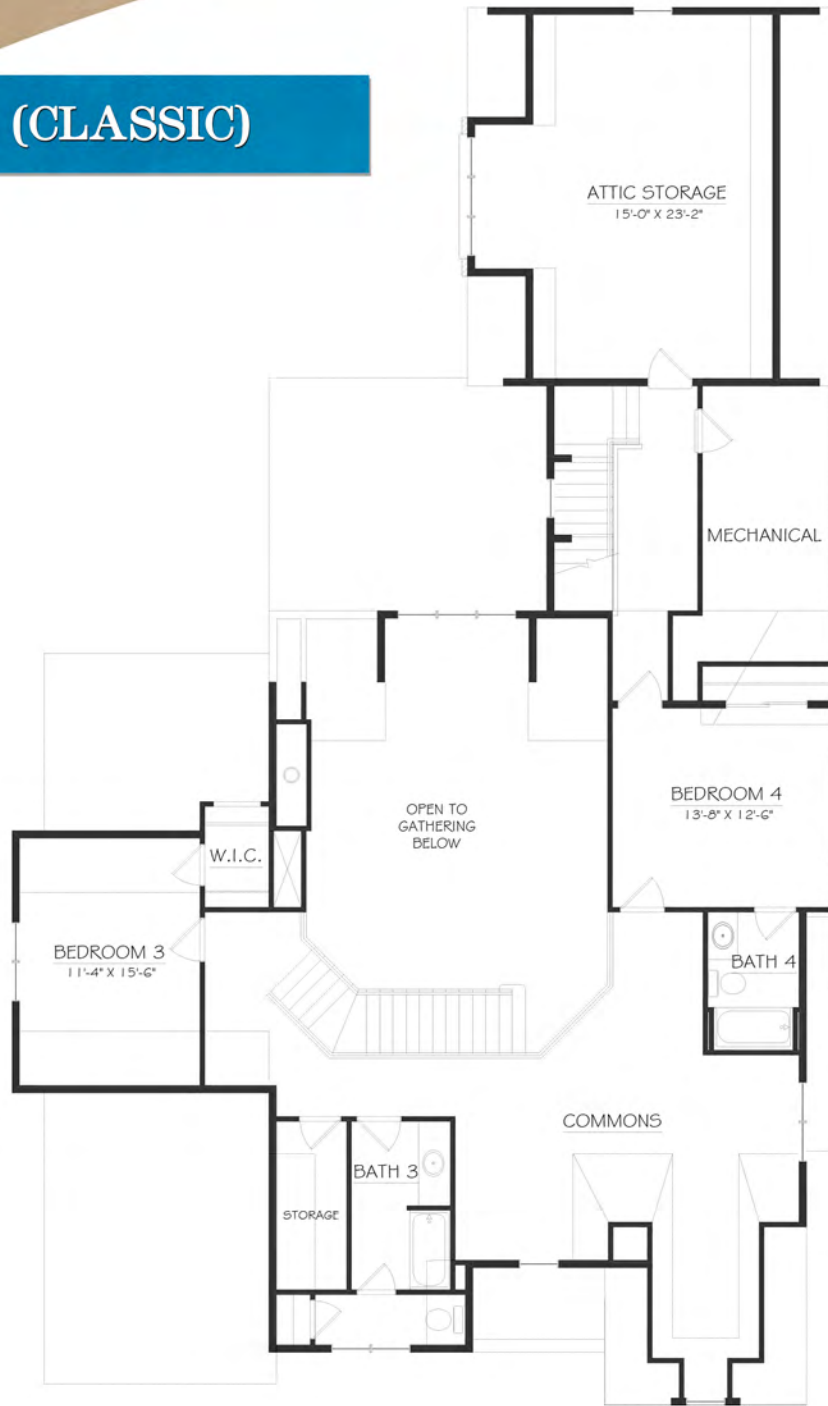
# 1<sup>ST</sup> FLOOR



**SADDLEBROOK**  
*The Luxury Homebuilder*

Saddlebrook Properties, LLC uses pictures, elevations and floor plans for illustrative marketing purposes only. Saddlebrook's working construction documents & codes take precedent in guiding the construction of each home. Measurements, prices and specifications are subject to change without notice. All offerings are subject to errors and omissions.

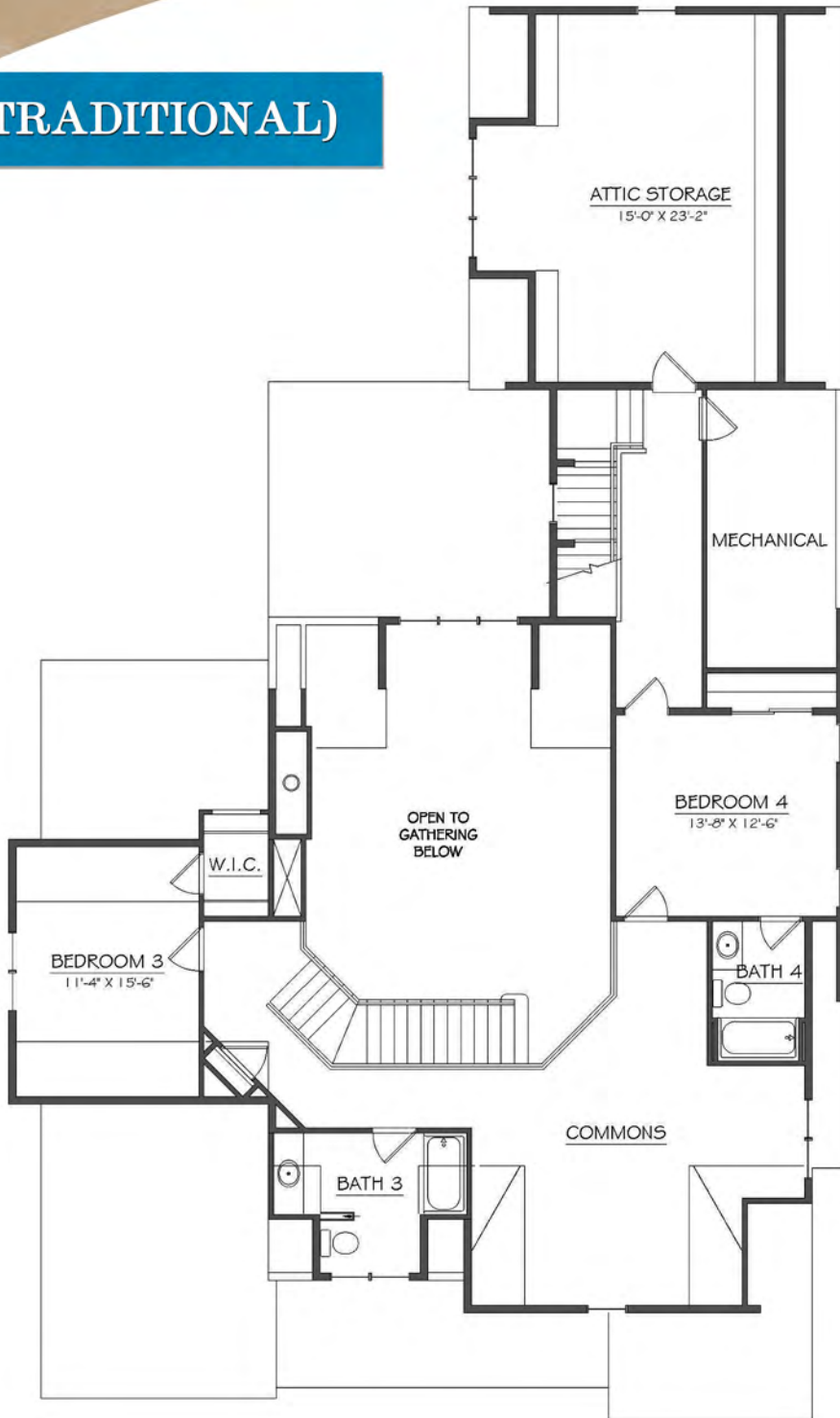
## 2<sup>ND</sup> FLOOR (CLASSIC)



**SADDLEBROOK**  
*The Luxury Homebuilder*

Saddlebrook Properties, LLC uses pictures, elevations and floor plans for illustrative marketing purposes only. Saddlebrook's working construction documents & codes take precedent in guiding the construction of each home. Measurements, prices and specifications are subject to change without notice. All offerings are subject to errors and omissions.

## 2<sup>ND</sup> FLOOR (TRADITIONAL)

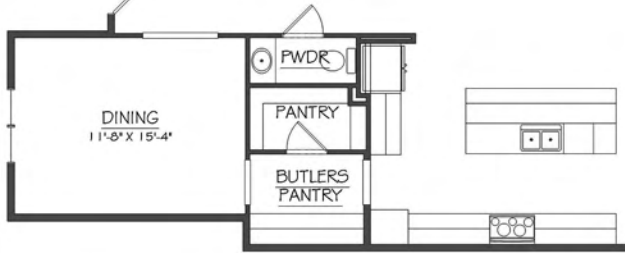


**SADDLEBROOK**  
*The Luxury Homebuilder*

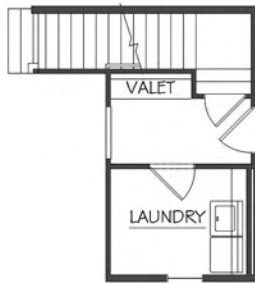
Saddlebrook Properties, LLC uses pictures, elevations and floor plans for illustrative marketing purposes only. Saddlebrook's working construction documents & codes take precedent in guiding the construction of each home. Measurements, prices and specifications are subject to change without notice. All offerings are subject to errors and omissions.

# Options

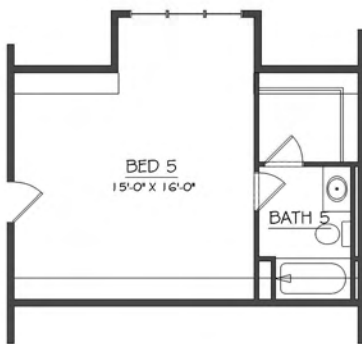
**Dining w/ Butler's Pantry**



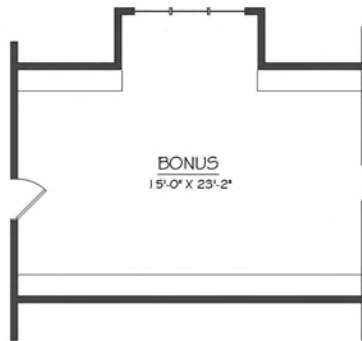
**Valet**



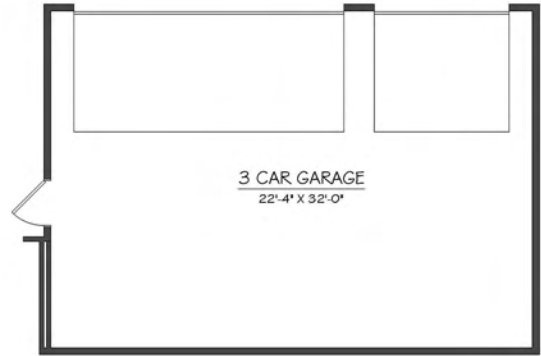
**Bed 5 & Bath 5**



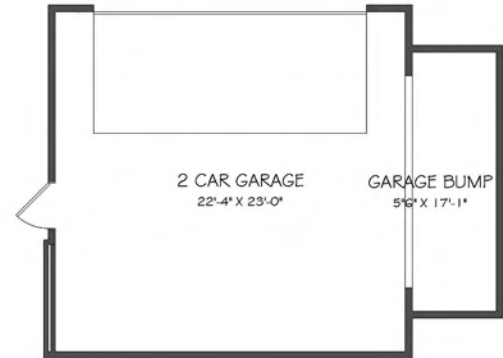
**Bonus**



**3rd Bay Garage**



**Garage Bump**



**China Niche**



**Deluxe Laundry**

